

Registration Form

Name _____
Address _____
Telephone
Number _____
E-mail _____
Hospital affiliation _____

Type of Practice

- Surgeon Anesthesiologist Intensivist
 General Practice Resident/Fellow
 Other (Paramedical, RRT, RN, Students)

Registration Fees (CAN/US\$)

Program Fee	\$ 500
Residents*, Fellows*	\$ 250

Total enclosed \$ _____

*Letter of verification from Dept. Chief must accompany applications for a reduced fee.

Course

- January 24th 2015
 March 7th 2015 June 6st 2015

I authorize University Health Network to charge my

- Visa MasterCard AMEX

Card #: _____

Expiry Date: _____

Signature: _____

If preferred a Money Order or Cheque made payable to:

Perioperative Echo Research Fund

No Onsite Registration available

A handling fee of \$50 is deducted for cancellations. Refunds requests must be received by mail on or two weeks before the Course.

No refunds will be made thereafter.

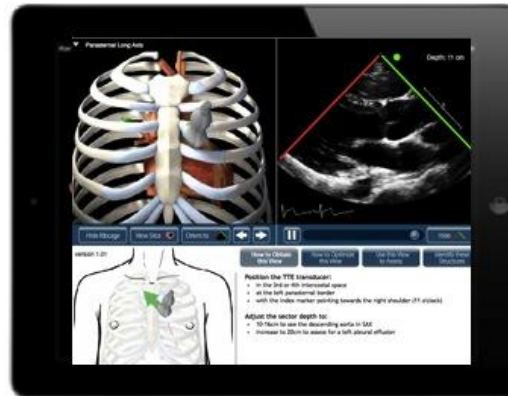
Mail to: Jo Carroll,

Department of Anesthesiology,
Toronto General Hospital,
200 Elizabeth St., 3EN-418
Toronto, Ontario, Canada M5G 2C4
FAX (416) 340-3698
E-mail: jo.carroll@uhn.ca



Echocardiography Simulator

During this course all participants will have unlimited access to a state of the art echocardiography simulator. This high-fidelity simulator is an integral part of the hands-on training to practice and understand standard views. A large bank of common pathology will also allow reproducing clinical scenarios and allowing the participants to integrate TTE into clinical decision-making.



Enhanced Learning

Perioperative Interactive Education (PIE) Standard Views App (<http://pie.med.utoronto.ca/TTE>), will be used during scanning of live models. This provides augmented 3D cardiac sono-anatomy to enhance learning at the bedside during the scanning sessions.



Department of Anesthesia and Pain Management
Toronto General Hospital
University Health Network

Focused Cardiac Ultrasound Course



Sponsored by
University of Toronto
Office of Continuing Education



Course

This 1-day course is designed to benefit practicing anesthesiologists, intensivists and anyone involved in the acute care of patients. It is intended to introduce physicians to the theory and practice of limited transthoracic echocardiography (TTE).

- No previous echocardiographic experience is required.
- The program is designed to allow **95% supervised hands-on** learning in a **1:5 instructor: student ratio**.
- Pre-course reading is necessary to maximize scanning time during the course. The reading package will be sent to each participant at the time of registration and includes links to on-line web-modules and a list of relevant references.
- Testing of theory (pre and post MCQ) and skills of all attendees will be part of the program.
- Completion of the program **does not certify** the participant for independent practice.

Course Objectives

Participation in the program will enable the attendee to:

1. Define 5 basic TTE views and the anatomical correlation used in a focused cardiac ultrasound exam
2. Obtain manual skills using a echo simulator mannequin to perform a limited TTE on healthy volunteers
3. Identify echo findings in common cardiac pathologies by using an echo simulator
4. Integrate FOCUS TTE exam in clinical scenarios for hemodynamic assessment

CME

This event is an Accredited Group Learning Activity (**Section 3**) as defined by the Maintenance of Certification Program of The Royal College of Physicians and Surgeons of Canada, approved by Continuing Education and Professional Development, Faculty of Medicine, University of Toronto up to a maximum of (**8 hours**). Each Section 3 hour is valued at 3 credits (**total 24 credits**).

CME Planning Committee

Drs. Massimiliano Meineri Annette Vegas,
Adriaan Van Rensburg

Ms. Jo Carroll, Course Coordinator

Course Outline

7.45-8.	Welcome and Introduction		
8.00-8.30	FOCUS Views with Simulator		
8.30 10.00	Hands-on Session 1 Parasternal views/Knobology		
	Simulator	Model A	Model B
8.30-9.00	Group 1	Group 2	Group 3
9.00-9.30	Group 2	Group 3	Group 1
9.30-10.00	Group 3	Group 1	Group 2
10.00-10.15	Coffee Break		
10.15-11.15	Hands-on Session 2 Apical view		
	Simulator	Model A	Model B
10.15-10.30	Group 1	Group 2	Group 3
10.30-11.00	Group 2	Group 3	Group 1
11.00-11.15	Group 3	Group 1	Group 2
11.15-12.15	Hands-on Session 3 Subcostal views		
	Simulator	Model A	Model B
11.15-11.30	Group 1	Group 2	Group 3
11.30-11.45	Group 2	Group 3	Group 1
11.45-12.00	Group 3	Group 1	Group 2
12.00-13.00	Lunch and Pathology		
13.00-14.30	Hands-on Session 4 Put it all together		
	Simulator	Model A	Model B
13.00-13.30	Group 1	Group 2	Group 3
13.30-14.00	Group 2	Group 3	Group 1
14.00-14.30	Group 3	Group 1	Group 2
14.30-14.45	Cofee Break		
14.45-16.00	Final test on Models		
16.00	Adjourn		

Faculty

Dr. Massimiliano Meineri
Associate Professor of Anesthesiology

Dr. Jacobo Moreno Garrijo
Assistant Professor of Anesthesiology

Dr. Wilfredo Puentes
Cardiac Anesthesia Fellow

Dr. Adam Snyman
Assistant Professor of Anesthesiology

Dr. Adriaan Van Rensburg
Assistant Professor of Anesthesiology

Dr. Annette Vegas
Associate Professor of Anesthesiology

Declaration of Potential Conflict of Interest

Speakers will disclose to the audience, any real or apparent conflict(s) of interest that may have a direct bearing on the subject matter of this program.

Location

Toronto General Hospital

Preoperative Care Unit
585 University Avenue, 2 Peter Munk
Toronto, ON, M5G 2C4

Upcoming Courses

2015

- Saturday, January 24th
- Saturday, March 7th
- Saturday, June 6th

Each Course is limited to a maximum of 15 participants